



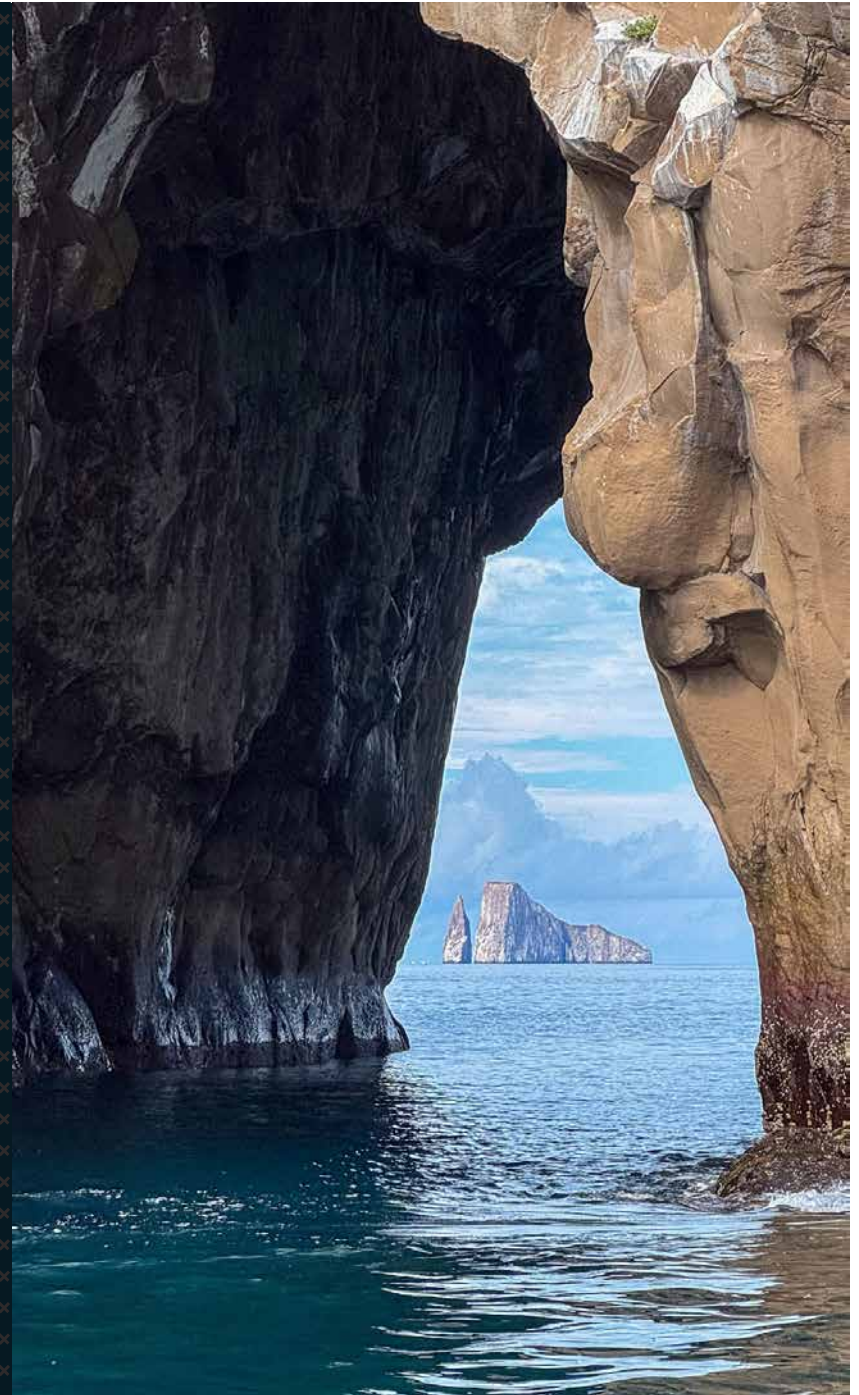
SeaStar
GALAPAGOS YACHT

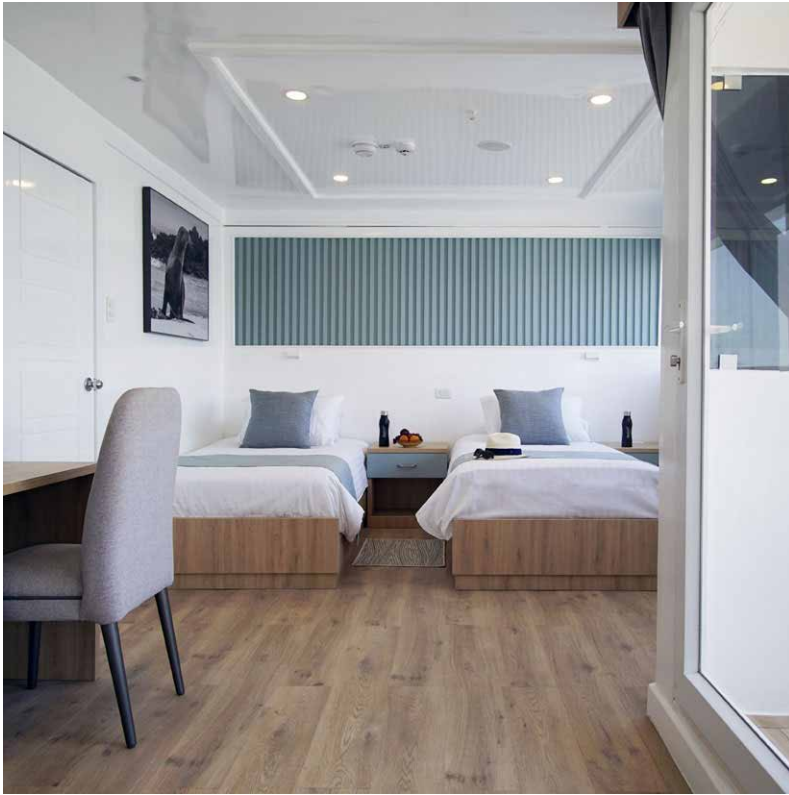
GALAPAGOS SEA STAR LUXURY YACHT



Galapagos Sea Star is a luxury yacht accommodating 16 guests in 8 spacious cabins, including interconnected suites and triple rooms, all with ensuite bathrooms and air conditioning. Social areas include a comfortable lounge, reading corner, bar, al fresco dining, and a refined sun-deck with two jacuzzis, perfect for relaxing or stargazing under the islands' skies.

- ✓ *Perfect for families & groups*
- ✓ *Interconnected & triple cabins available*
- ✓ *Four Balcony Suites*
- ✓ *Two sundeck jacuzzis*
- ✓ *Onboard Internet service*





MAIN DECK BALCONY SUITE (x4)

- Area 271 ft² / 25 m²
- 2 Twin Beds (can be converted into a King Size bed)
- Safety box
- Panoramic windows
- Private balcony

UPPER DECK GALAPAGOS SUITE (X3)

- Area 271 ft² / 25 m²
- 2 Twin Beds (can be converted into a King Size bed)
- 1 Sofa Bed (cabin #4)
- Safety box
- Panoramic windows



GALAPAGOS SEA STAR YACHT TECHNICAL SPECIFICATIONS

CONSTRUCTION	Rebuild 2019
LENGTH	137 ft (42m)
BEAM	29 ft (9m)
DRAFT	7 ft (2m)
GROSS TONNAGE	480 GT
SPEED	10 knots
CAPACITY	16 passengers
MAIN ENGINES	2 YUCHAI 450 HP
WATER MAKER	2000 Gallons / day
ELECTRICITY	110 V
CREW	10 + 1 Naturalist Guide + 1 Cruise Director

- ACCOMMODATION**
- **Main Deck:** Dining room, lounge, 4 Balcony Suites (271 ft² / 25 m²)
 - **Upper Deck:** 3 Galapagos Suites (271 ft² / 25 m²), 1 Sea Star Suite (378 ft² / 35 m²)
 - **Sun Deck:** 2x Jacuzzi, al fresco dining and social area

On board: DVD / TV, Hairdryer, Jacuzzi, Kayaks, Library, Private Balconies, Snorkeling equipment, Green politics

SAFETY & NAVIGATION

- 2 Zodiacs for 25 people
- Smoke detectors
- Automatic CO² tank for kitchen and engine room
- 1 Satellite compass
- 2 magnetic Compasses
- Tracking equipment

UPPER DECK SEA STAR SUITE (X1)

- Area 378 ft² / 35 m²
- 2 Twin Beds (can be converted into a King Size bed)
- Sofa Bed
- Seating area
- Safety box
- Panoramic windows



SEA STAR GALAPAGOS ITINERARIES

6 DAY CRUISE "A"

Tue	am pm	Arrival in San Cristobal Island Airport San Cristobal Island: Tortoise Breeding Center
Wed	am pm	Española Island: Suarez Point Española Island: Gardner Bay/Islet, Osborn Islet
Thu	am pm	Floreana: Cormorant Point / Devil's Crown Floreana: Baroness Viewing Pt./ Post Office Bay
Fri	am pm	Santa Fe Island South Plaza Island
Sat	am pm	North Seymour Island Santa Cruz Island: Bachas Beach
Sun	am pm	Mosquera islet Santa Cruz Island: Dragon Hill

5 DAY CRUISE "B"

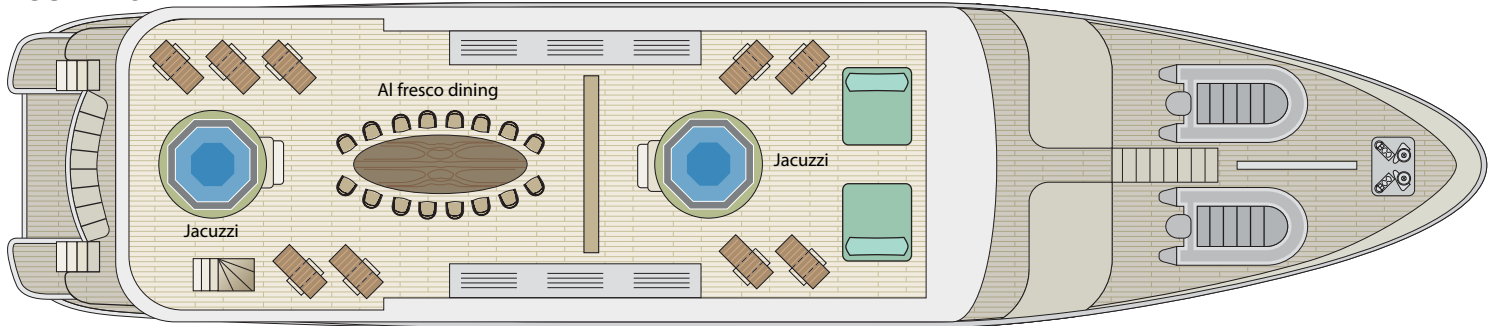
Mon	am pm	Santa Cruz Island: Black Turtle Cove Chinese Hat Islet
Tue	am pm	Genovesa Island: El Barranco Genovesa Island: Darwin Bay
Wed	am pm	Bartholomew Island Santiago Island: Sullivan Bay
Thu	am pm	Santa Cruz Island: Highlands Santa Cruz Island: Tortoise Breeding Center

6 DAY CRUISE "C"

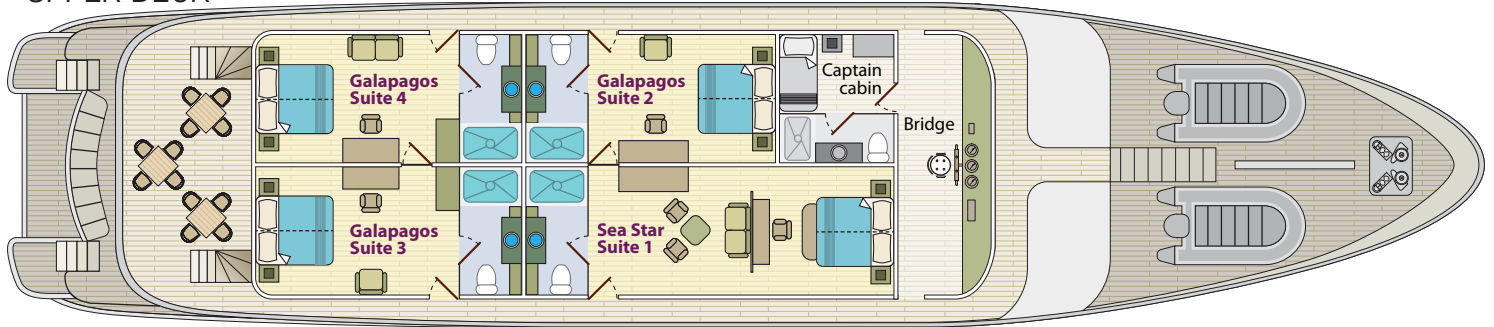
Fri	am pm	Isabela: Las Tintoreras / Sierra Negra Volcano Isabela Island: Wetlands
Sat	am pm	Isabela Island: Moreno Point Isabela Island: Elizabeth Bay
Sun	am pm	Fernandina Island: Espinosa Point Isabela Island: Tagus Cove
Mon	am pm	Santiago: Espumilla Beach or Buccaneer Cove Santiago Island: Egas Port
Tue	am pm	San Cristobal Island: Lobos Island Transfer to San Cristobal Airport

GALAPAGOS SEA STAR DECKPLANS

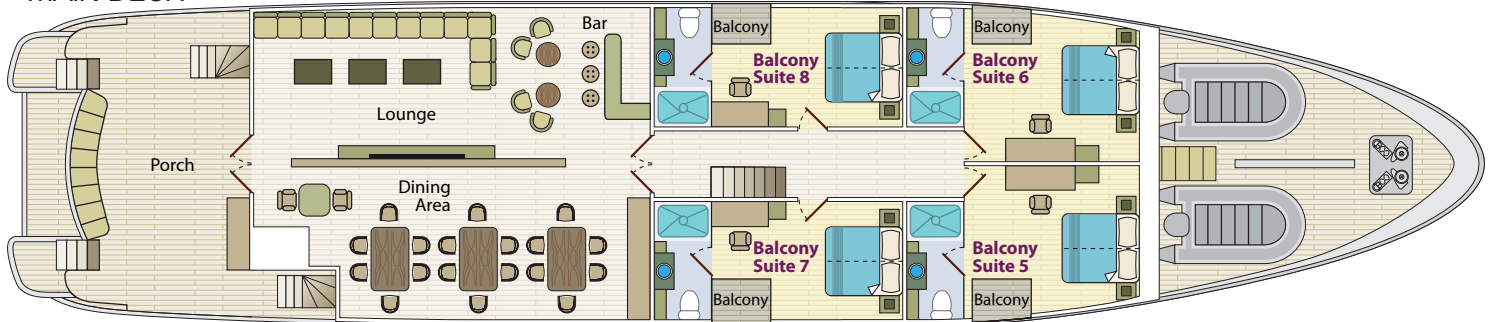
SUNDECK



UPPER DECK

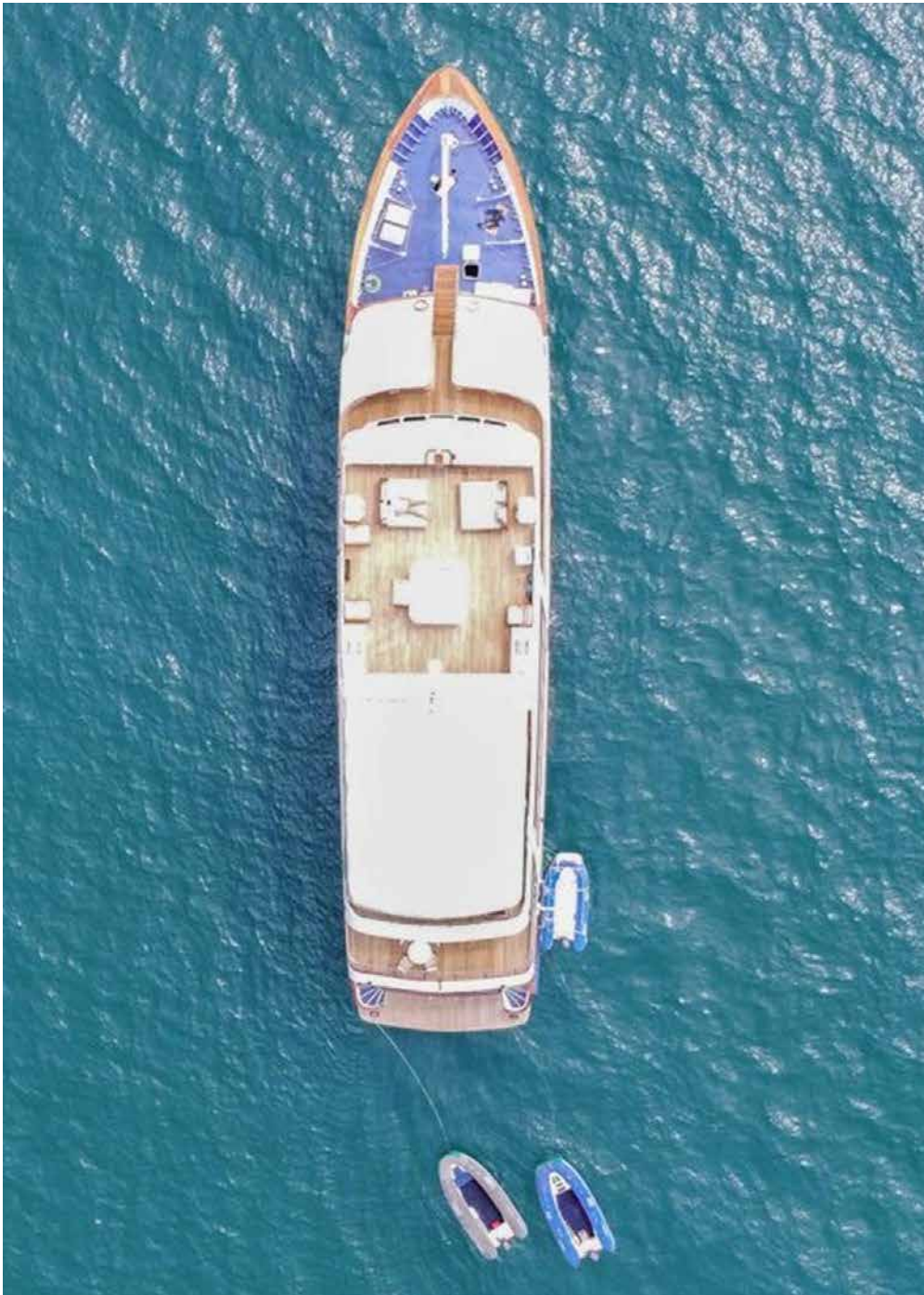


MAIN DECK



Escape routes are posted in each cabin. Please take the time to review these carefully.





SeaStar
GALAPAGOS YACHT

www.seastargalapagos-cruise.com