



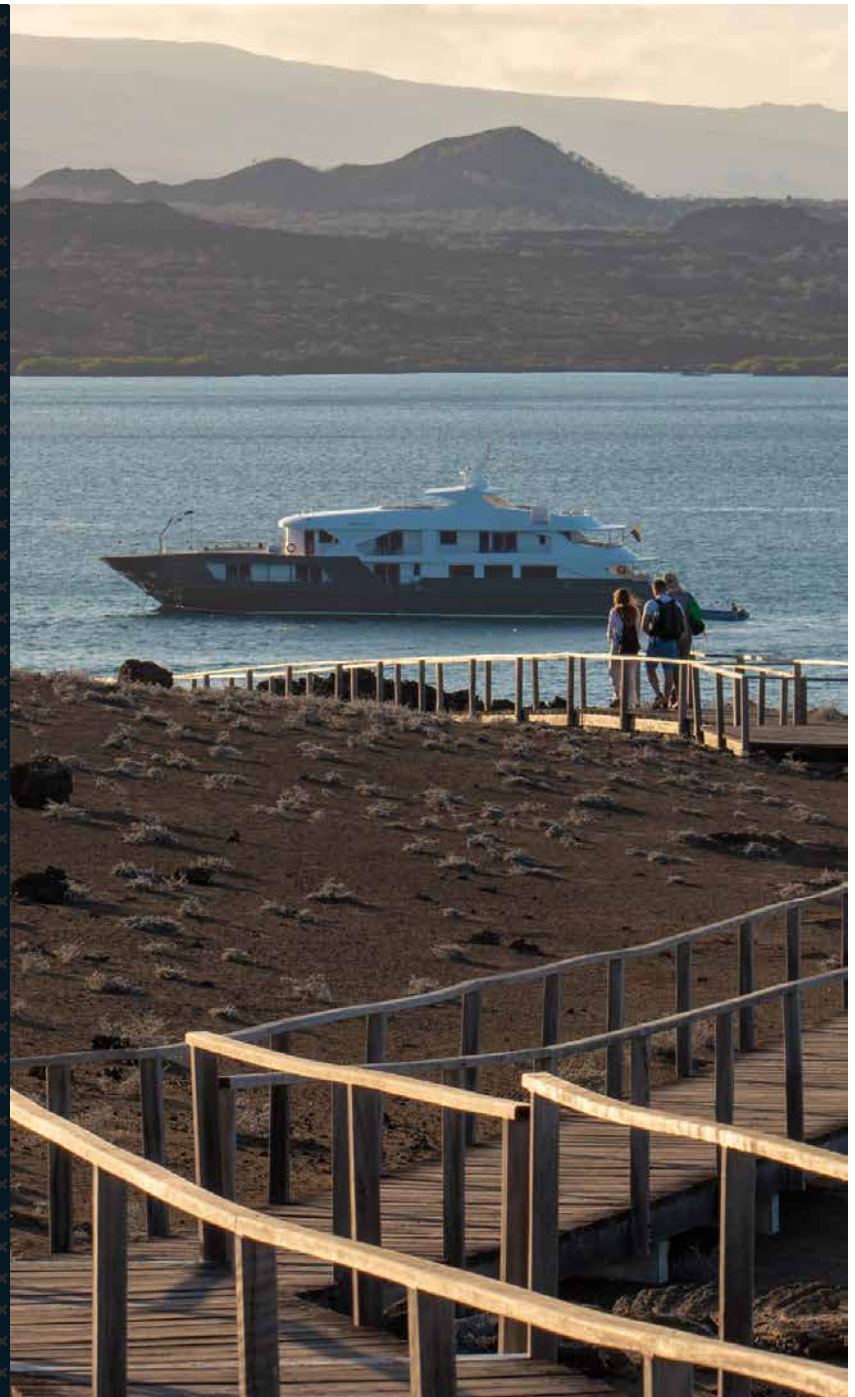
Infinity

INFINITY LUXURY GALAPAGOS YACHT



This beautiful ship was designed with families and small groups in mind. With two large suites and eight cabins some of which are interconnected, all with panoramic windows and personal balconies, guests will feel right at home. Travelers can choose from 4, 5 and 8-day itineraries that are all full adventure.

- ✓ *Huge Staterooms*
- ✓ *Private Balconies*
- ✓ *2 National Park Guides*
- ✓ *Interconnected cabins*





UPPER DECK SUITE (x2)

- #7: 331ft² / 31m² and #8: 359ft² / 33m² (includes balcony)
- 1 King Size bed
- TV and DVD in the room
- Panoramic windows
- Private balcony
- 1 interconnected cabin



UPPER DECK STATEROOM (x2)

- #9 and #10: 291ft² / 27m² (including balcony)
- 2 Twin Beds (can be converted into California King Size)
- TV and DVD in the room
- Panoramic windows
- Private balcony
- 1 interconnected cabin





MAIN DECK STATEROOM (x6)

- #1 & #2: 283ft² / 26m², #3 & #4: 276ft² / 26m² and #5 & #6: 270ft² / 25m² (including balcony)
- 2 Twin Beds (can be converted into California King Size)
- TV and DVD in the room
- Panoramic windows
- Private balcony



INFINITY YACHT TECHNICAL SPECIFICATIONS

CONSTRUCTION	2018
LENGTH	161 feet / 49 meters
BEAM	33 feet / 10 meters
DRAFT	8 feet / 2.4 meters
SPEED	10 knots
CAPACITY	20 passengers
MAIN ENGINES	2x SCANIA - 550HP
GENERATORS	2x JohnDeere Genset 70kw@1800rpm
GROSS TONNAGE	420 Tons
CREW	12 members + 1 Cruise Director + 2 Guides*

- ACCOMMODATION**
- **Main Deck:** 6 double cabins (#1 & #2: 283ft² / 26m², #3 & #4: 276ft² / 26m² and #5 & #6: 270ft² / 25m²), Dining room (1,216ft² / 113m²).
 - **Upper Deck:** 2 double Suites (#7: 331ft² / 31m² and #8: 359ft² / 33m²). 2 double cabins (#9 & #10: 291ft² / 27m²). Suite 8 and Cabin 10 are interconnected.

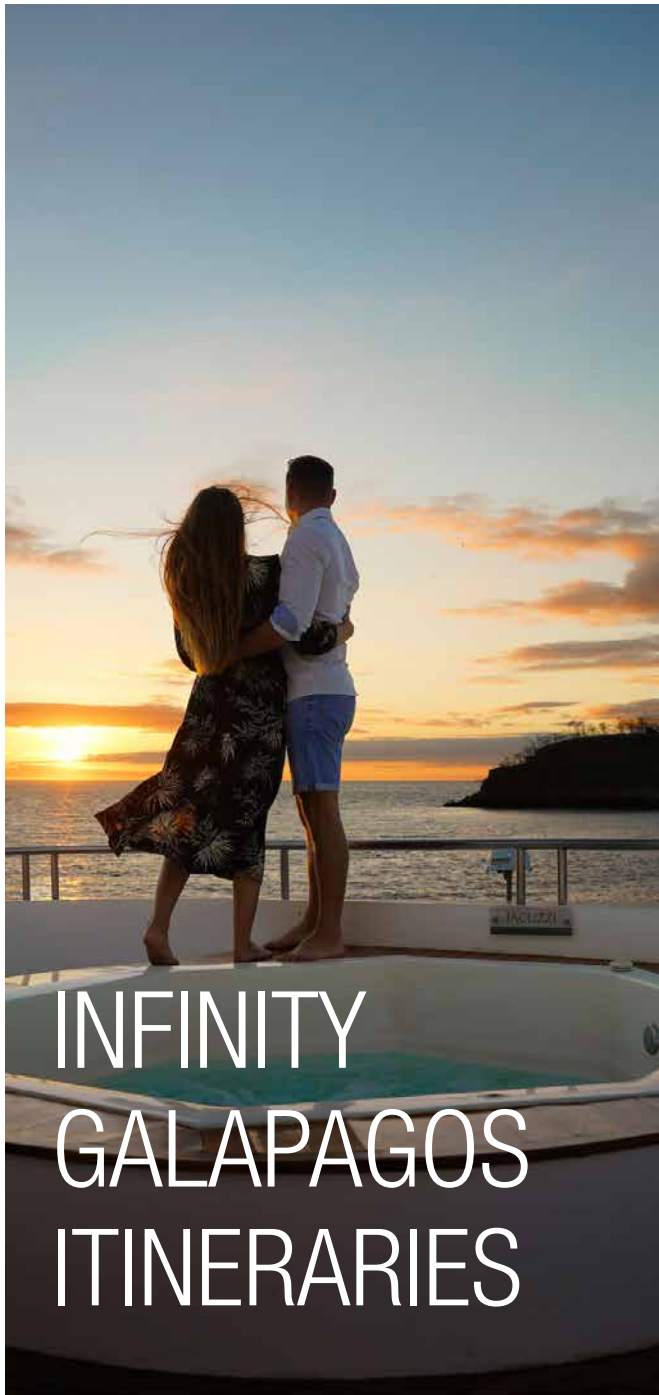
*All cabins with private balconies, hot water and air-conditioning.

SAFETY & NAVIGATION

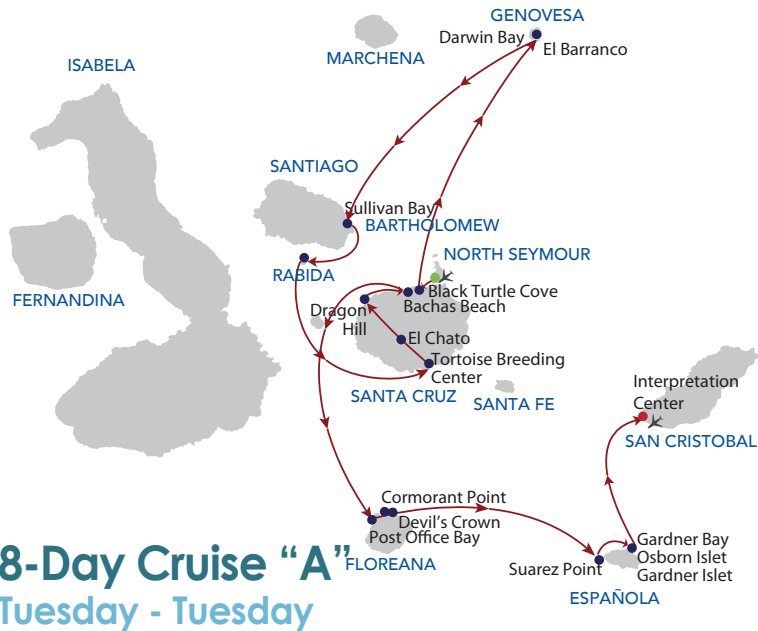
All equipment meets / exceeds the international safety standards:

- Life vests
- GPS
- Sonar
- Naval radars
- Fire detection and prevention systems

*Only 1 Naturalist Guide available when the number of passengers is less than 17.



8 DAY CRUISE (A)		4 DAY CRUISE
Tue	am pm	Baltra Airport: Arrival. Transfer to boat Santa Cruz: Black Turtle Cove
Wed	am pm	Genovesa: El Barranco Genovesa: Darwin Bay
Thu	am pm	Santiago: Sullivan Bay Rabida Island
Fri	am pm	Santa Cruz: Tortoise Breeding Center Santa Cruz: El Chato
Sat	am pm	Santa Cruz: Dragon Hill Santa Cruz: Bachas Beach
Sun	am pm	Floreana: Post Office Floreana: Cormorant Point/Devils Crown
Mon	am pm	Española: Suarez Point Española: Gardner Bay/Osborn Islet/Gardner Islet
Tue	am pm	San Cristobal: Interpretation Center S.Cristobal: Tortoise Breeding Center or Puerto Chino
Wed	am pm	Santa Fe South Plaza
Thu	am pm	Santa Cruz: Tortoise Breeding Center Santa Cruz: Twin Craters
Fri	am pm	Isabela: Moreno Point Isabela: Elizabeth Bay
Sat	am pm	Isabela: Urbina Bay Isabela: Tagus Cove
Sun	am pm	Fernandina: Espinosa Point Isabela: Vicente Roca Point
Mon	am pm	Santiago: Egas Port Bartholomew Island
Tue	am pm	North Seymour Baltra Airport
8 DAY CRUISE (B)		5 DAY CRUISE
8 DAY CRUISE (B)		8 DAY CRUISE B

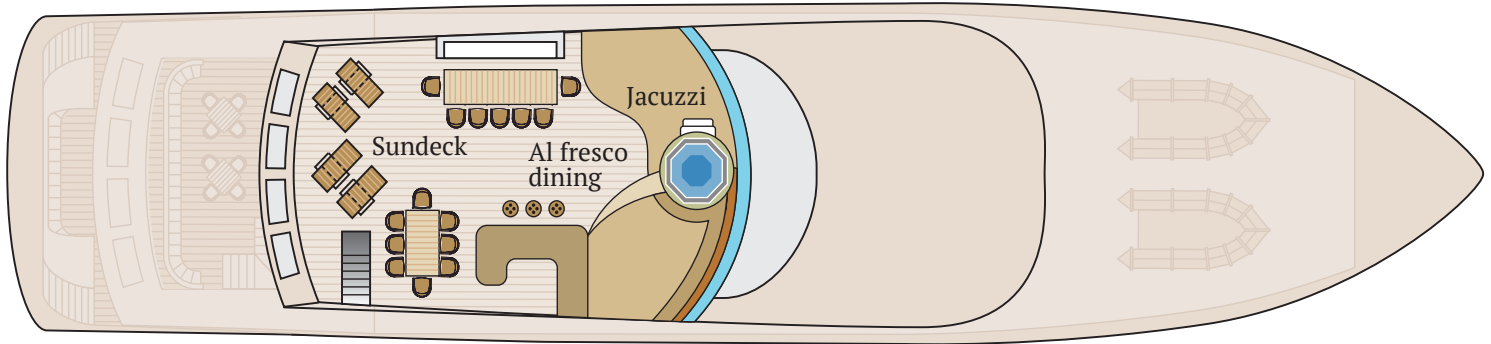


● Arrival ● Visitor Site ● Departure ✈ Airport

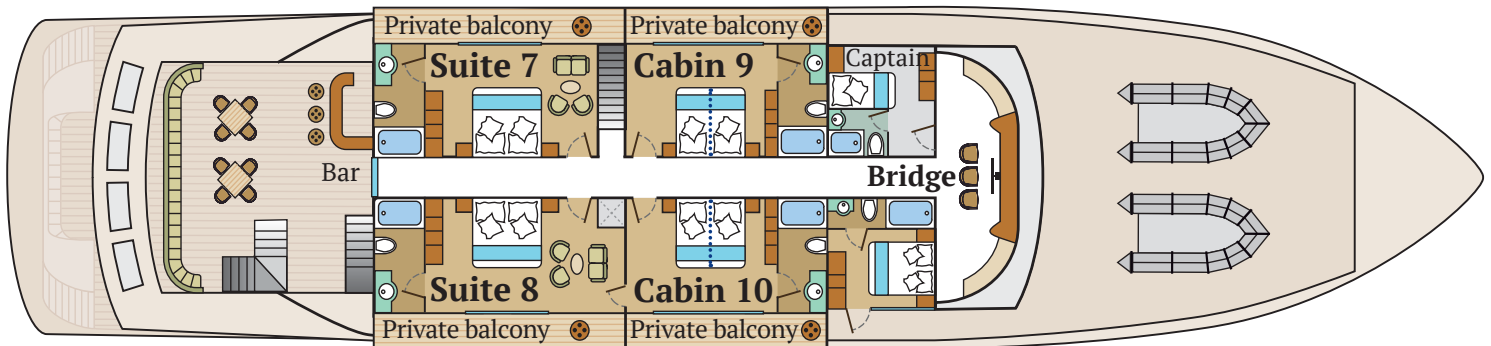
*Itineraries subject to change without previous notice.

INFINITY DECKPLANS

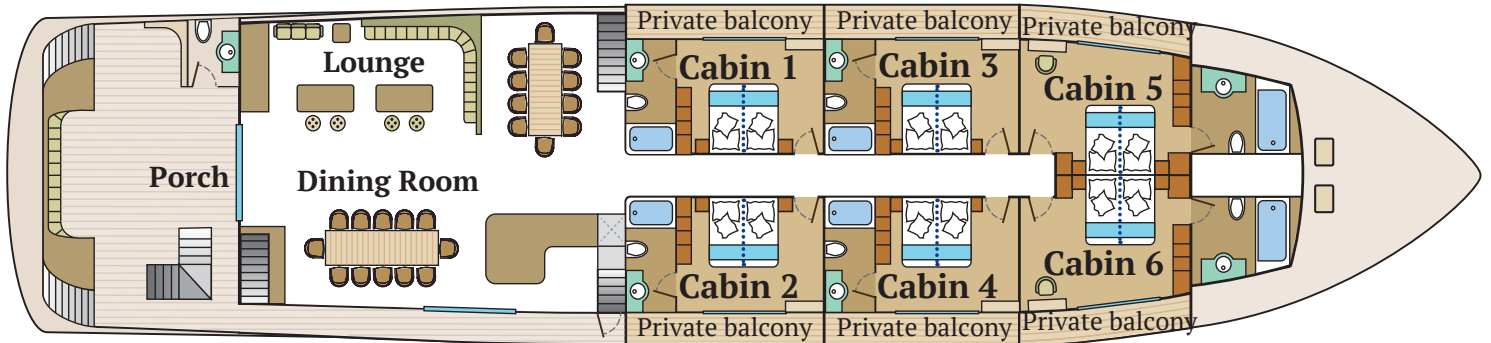
SUNDECK



UPPER DECK



MAIN DECK



Escape routes are posted in each cabin. Please take the time to review these carefully.





Infinity

www.infinity-galapagos.com