



Natural.
Paradise

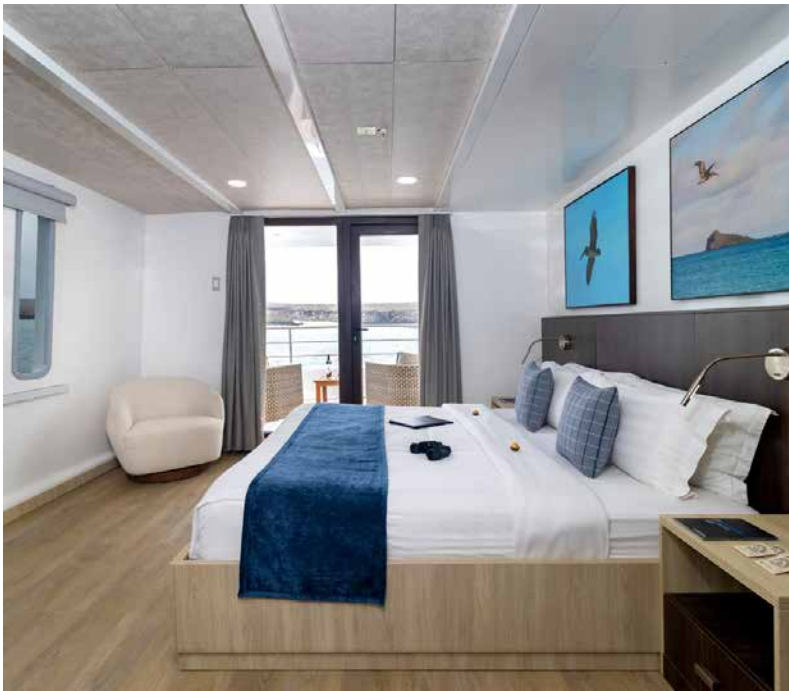
NATURAL PARADISE LUXURY GALAPAGOS ISLANDS YACHT



The Natural Paradise, built in 2016, is all about elegance and comfort. This luxury yacht offers travelers a variety of accommodation options that suit everyone's needs, while always offering the best quality in overall experience. Ten crew for sixteen passengers means high level service as you cruise the Galapagos while enjoying the sundeck with jacuzzi and cozy al-fresco dining.

- ✓ *Excellent itineraries*
- ✓ *Spacious Sundeck*
- ✓ *Private Balconies*
- ✓ *Large Suites Available*





UPPER DECK SUITE (x2)

- Area 360 ft² / 33 m² (including balcony)
- 1 King Size bed
- Panoramic windows
- Private balcony



MAIN DECK JR. SUITE (x1)

- Area 317 ft² / 29 m²
- 1 King Size bed + sofa bed
- TV in adjacent room
- Large windows





UPPER DECK JR. SUITE (x2)

- Area 226 ft² / 21 m² (including balcony)
- 2 Twin Beds (can be converted into California King Size)
- Large windows
- Private balcony



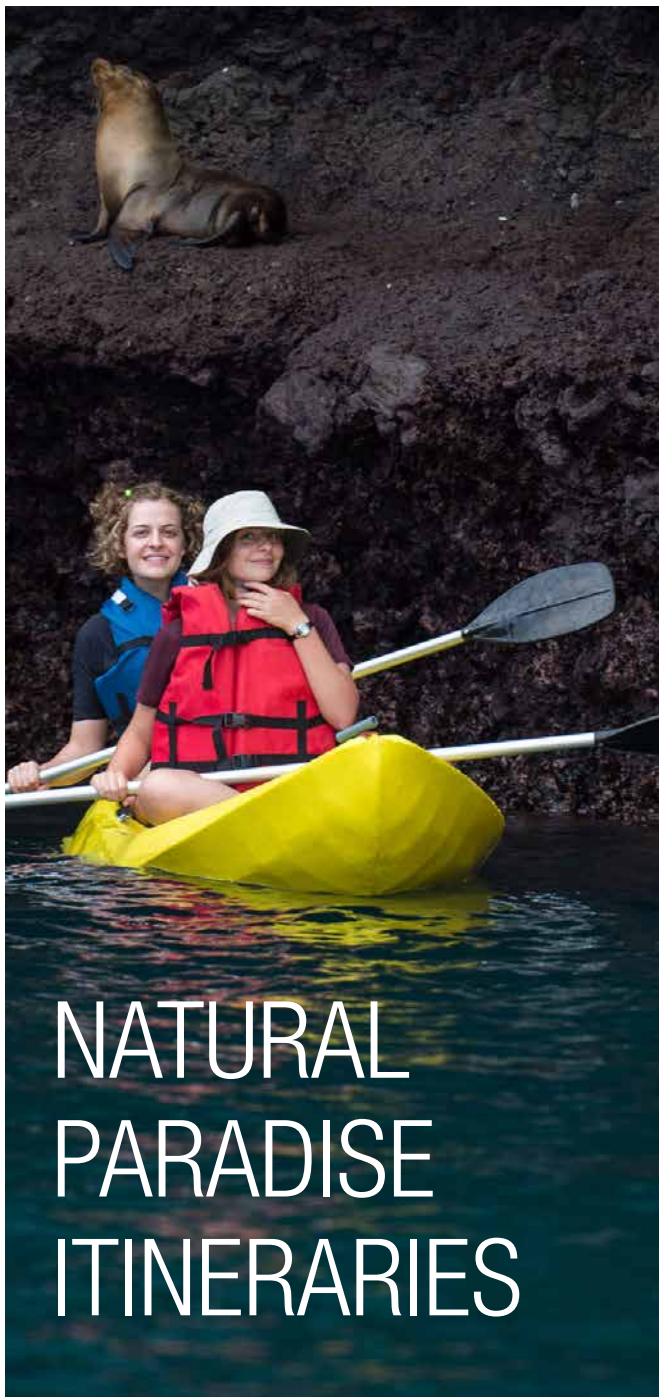
MAIN DECK STATEROOM (x2)

- Area 172 ft² / 16 m²
- 2 Twin Beds (can be converted into California King Size)
- Large windows

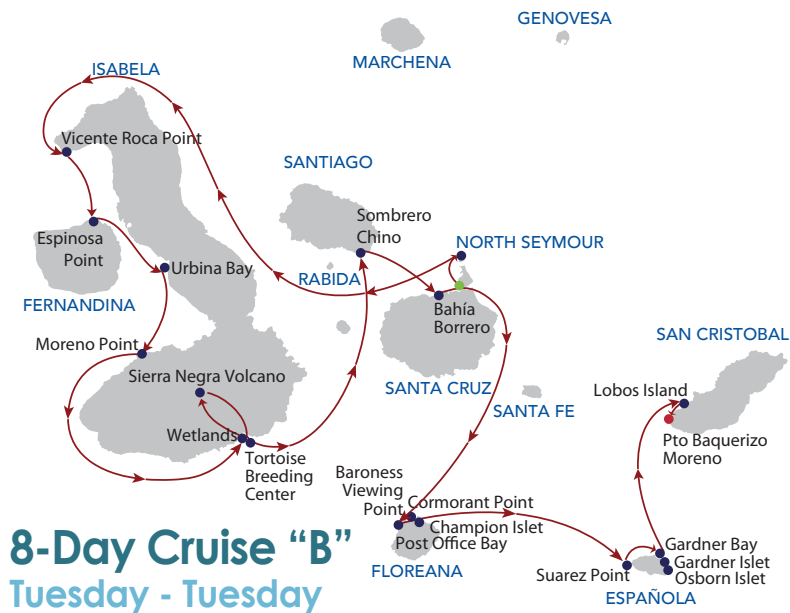


LOWER DECK STATEROOM (x2)

- Area 224 ft² / 21 m²
- 2 Twin Beds (can be converted into California King Size)
- Porthole windows



8 DAY CRUISE (A)		8 DAY CRUISE (B)	
Tue	am pm	Arrival to San Cristobal Airport: Transfer to boat San Cristobal: Kicker Rock / Witch Hill	5 DAY CRUISE
Wed	am pm	South Plaza Island Santa Cruz: Black Turtle Cove	
Thu	am pm	Rabida Island Bartholomew Island	
Fri	am pm	Santiago Island: Sullivan Bay Santa Cruz: Dragon Hill	
Sat	am pm	Santa Cruz: Twin Craters Santa Cruz: Highlands / Tortoise Breeding Center	
Sun	am pm	Genovesa: El Barranco Genovesa: Darwin Bay	4 DAY CRUISE
Mon	am pm	Santiago: Espumilla Beach / Buccaneer Cove Santiago: Egas Port	
Tue	am pm	Santa Cruz: Bachas Beach North Seymour Island	
Wed	am pm	Isabela: Vicente Roca Point Fernandina: Espinosa Point	
Thu	am pm	Isabela: Urbina Bay Isabela: Moreno Point	8 DAY CRUISE (B)
Fri	am pm	Isabela: Sierra Negra Volcano Isabela: Wetlands / Tortoise Breeding Center	
Sat	am pm	Chinese Hat Santa Cruz: Borrero Bay	
Sun	am pm	Floreana: Baroness Viewing Point/Post Office Bay Floreana: Cormorant Point / Champion Islet	
Mon	am pm	Española: Suarez Point Española: Gardner Bay/Gardner Islet/Osborn Islet	
Tue	am pm	San Cristobal: Lobos Island Transfer to the San Cristobal Airport	

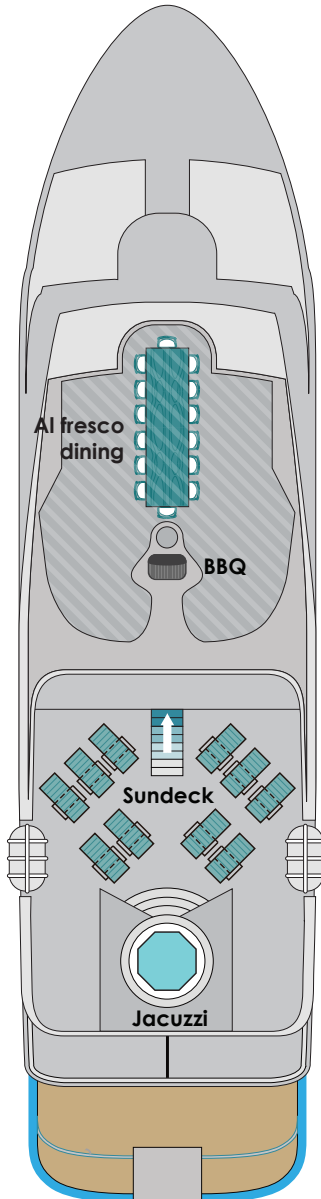


● Arrival ● Visitor Site ● Departure ✈ Airport

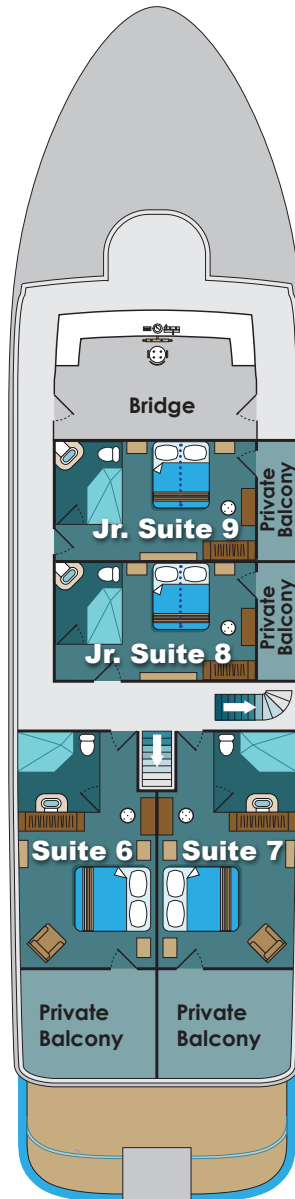
*Itineraries subject to change without previous notice.

NATURAL PARADISE DECKPLANS

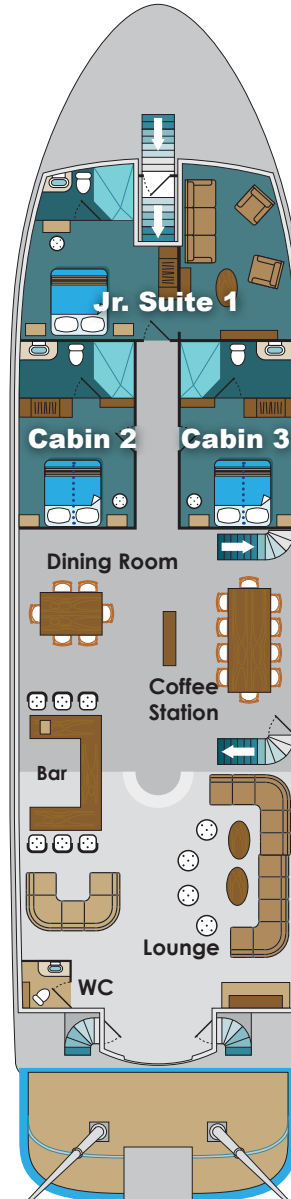
SUNDECK



UPPER DECK



MAIN DECK



LOWER DECK



 Escape routes are posted in each cabin. Please take the time to review these carefully.

NATURAL PARADISE YACHT

TECHNICAL SPECIFICATIONS

CONSTRUCTION	2016
LENGTH	111 feet / 34 meters
BEAM	26 feet / 8 meters
DRAFT	4 feet / 1.40 meters
SPEED	14 knots
CAPACITY	16 passengers
MAIN ENGINES	Cummins - 2 X 400 HP
GROSS TONNAGE	145 Tons
EXTERIOR	GFRP (fiber reinforced polymer)
GENERATORS	2 X 50 Kw
CREW	9 members +1 Cruise Director +1 Guide

- ACCOMMODATION**
- **Upper Deck:** 4 double cabins with private balcony
 - **Main Deck:** Dining room, bar, social area, 3 double cabins
 - **Lower Deck:** 2 double cabins

*All cabins with private bathrooms, hot water and air-conditioning

SAFETY & NAVIGATION

- FURUNO Radar
- GPS
- Depth sounders
- ACR radio
- VHF - DSS radio
- ABC Fire Extinguishers
- All required navigation equipment





 Natural
Paradise

www.naturalparadise-cruise.com